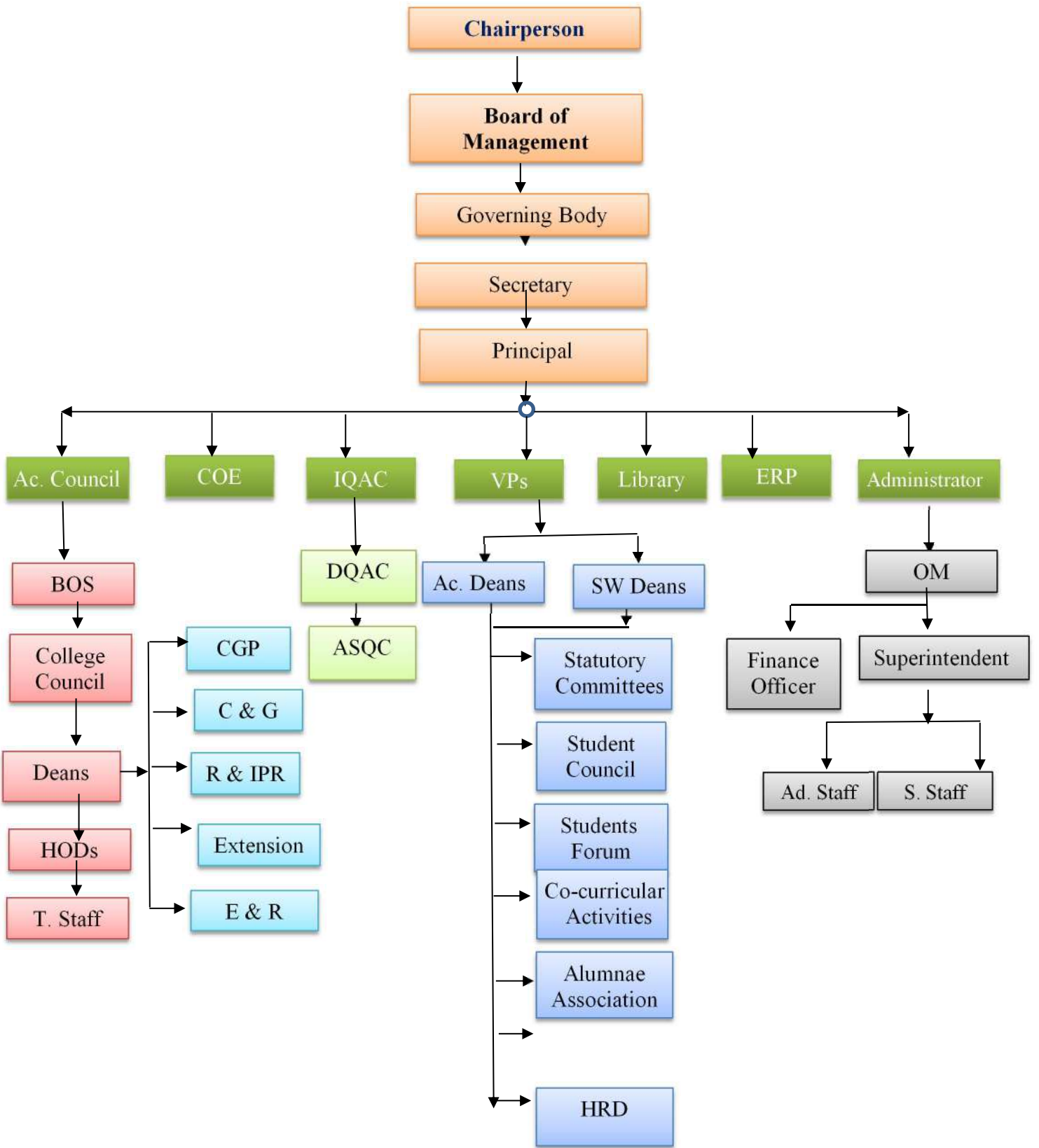


### Organisational Structure



**Note:**

Ac. Council	- Academic Council
BOS	- Board of Studies
HODs	- Head of Department
T. Staff	- Teaching Staff
CGP	- Career Guidance and Placement
C & G	- Counselling and Guidance
R & IPR	- Research and Intellectual Property Rights
E & R	- Ethics and Religion
COE	- Controller of Examinations
IQAC	- Internal Quality Assurance Cell
DQAC	- Department Quality Assurance Cell
ASQC	- Auxilium Students Quality Cell
VPs	- Vice Principals
Ac. Deans	- Academic Deans
SW Deans	- Students Welfare Deans
HRD	- Human Resource Development
ERP	- Enterprise Resource Planning
OM	- Office Manager
Ad. Staff	- Administrative Staff
S. Staff	- Supportive Staff